

# Kent Resource Partnership 'Why?'

Tonbridge and Malling BC  
Housing and Env't Services Advisory Board  
09 November 2015

Paul Vanston,  
Kent Resource Partnership Manager



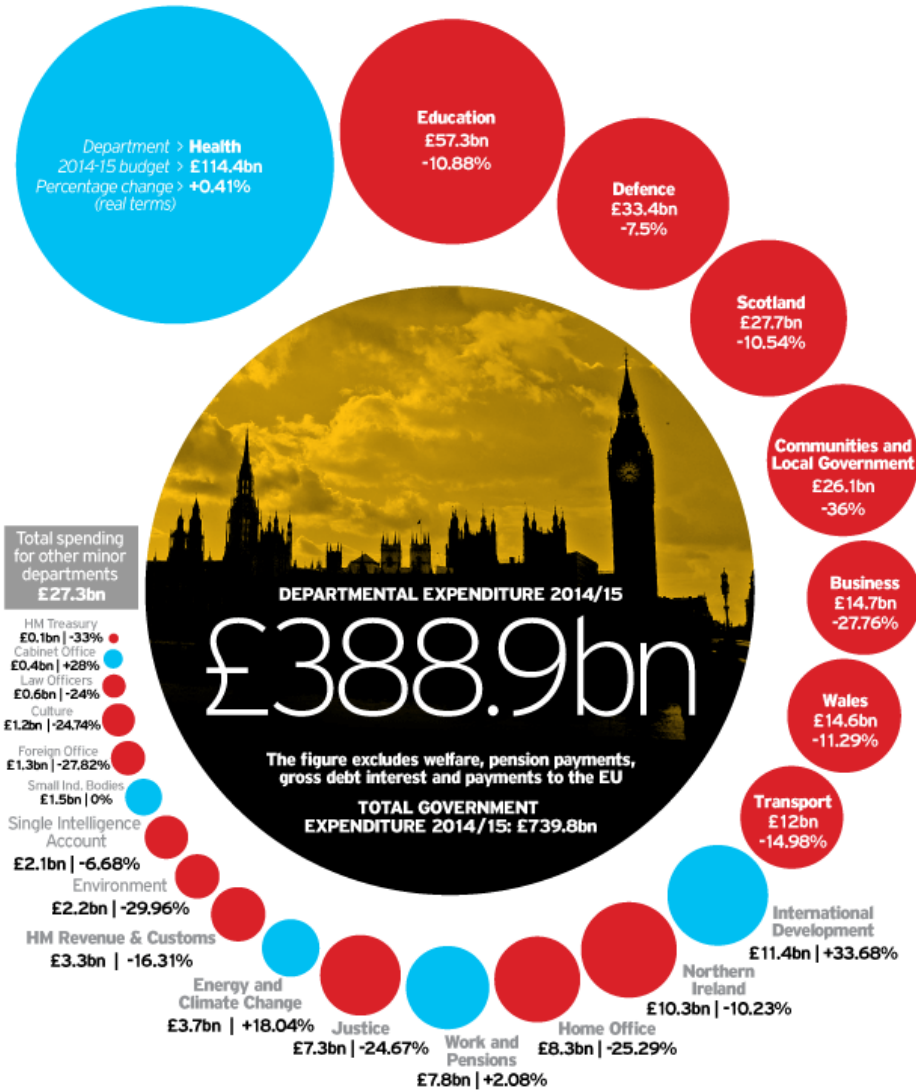
**DARTFORD**  
BOROUGH COUNCIL



# Spending Review 2010 > **Winners and losers**

A picture of the Government's budget by department in 2014/15.

Page 2

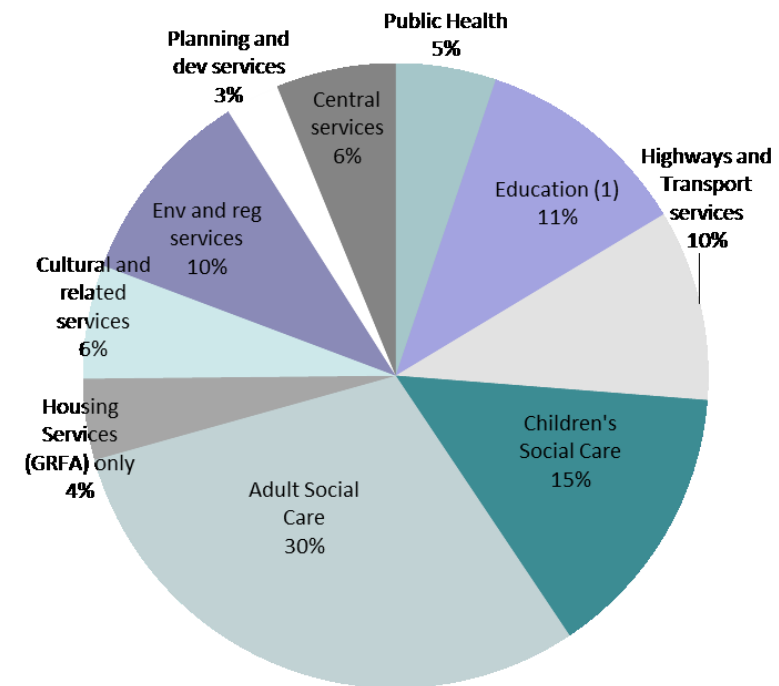
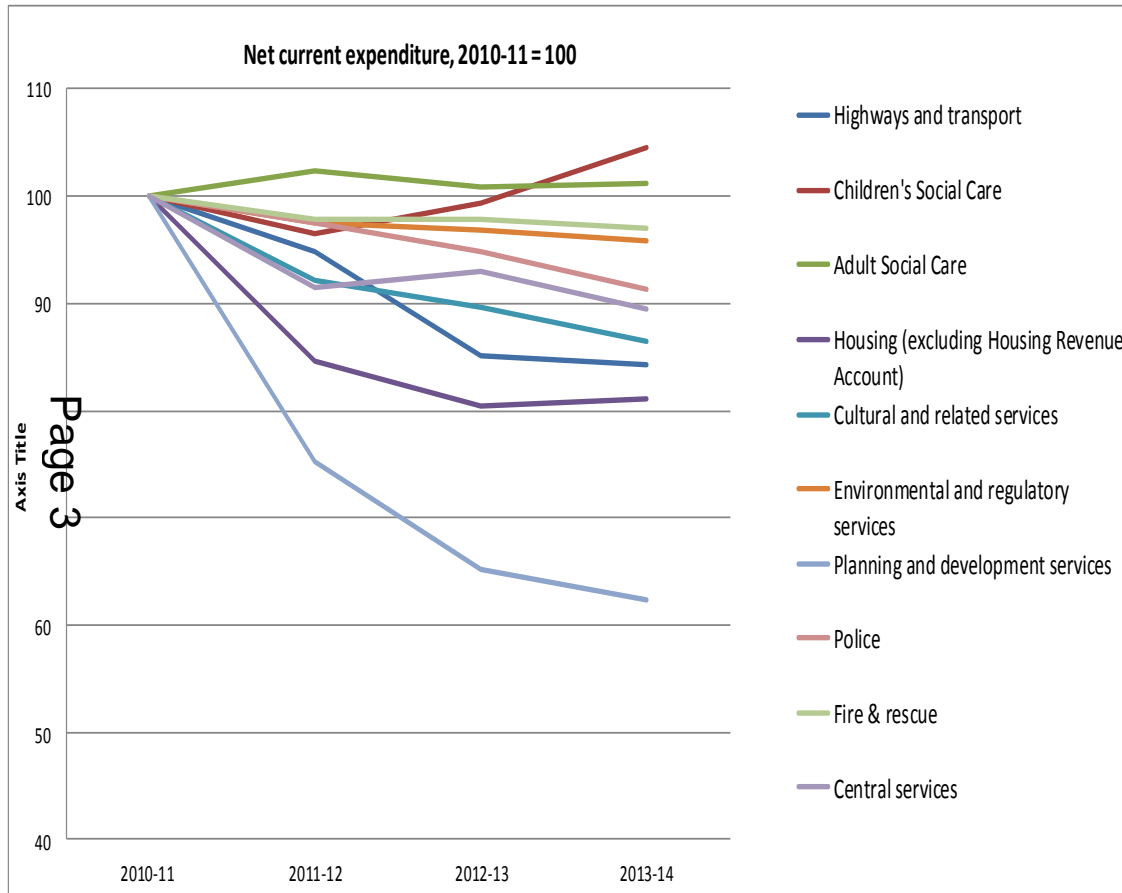


**DCLG** -36%  
**Defra** -30%  
**BIS** -28%

*More reductions coming our way*

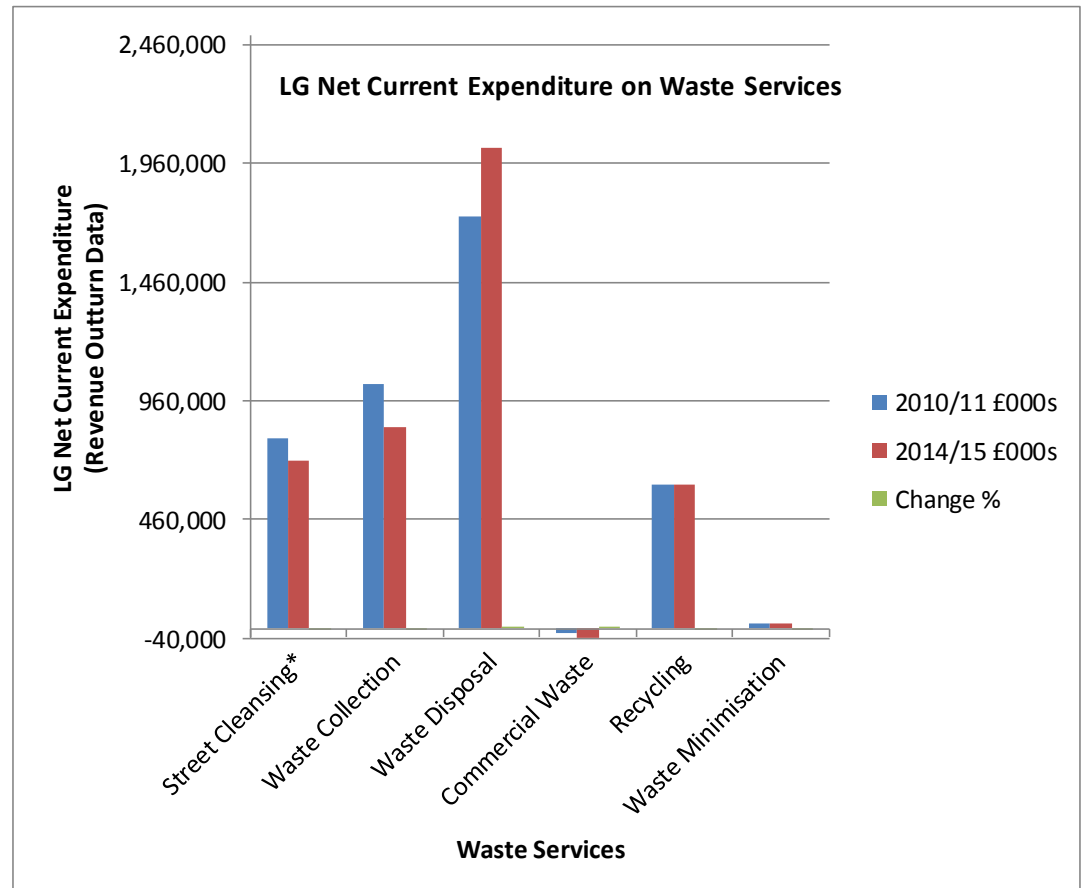
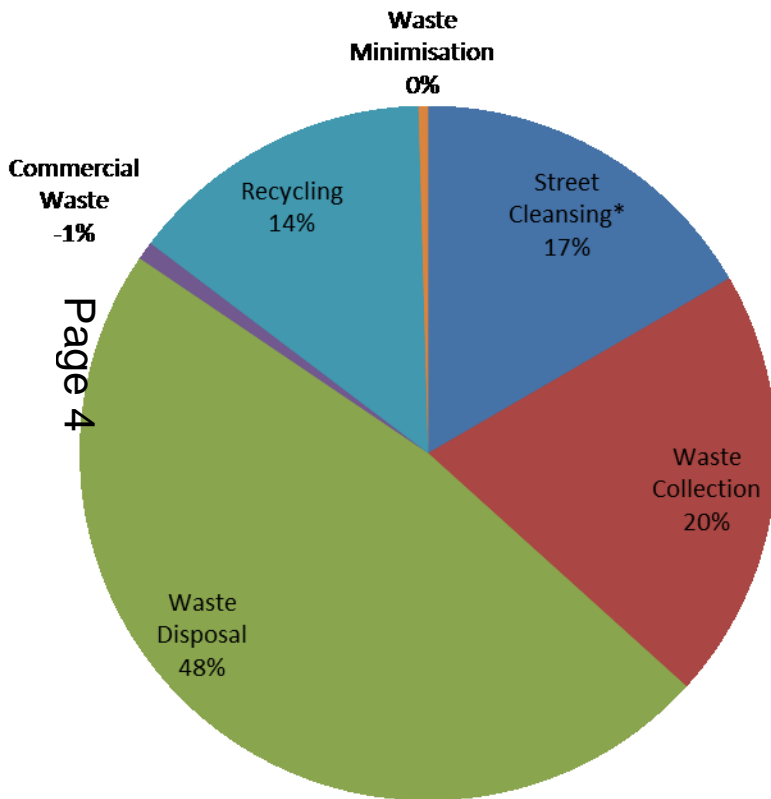
*(e.g. DCLG, Defra -30% over 4 years)*

# Impacts on councils of national finances



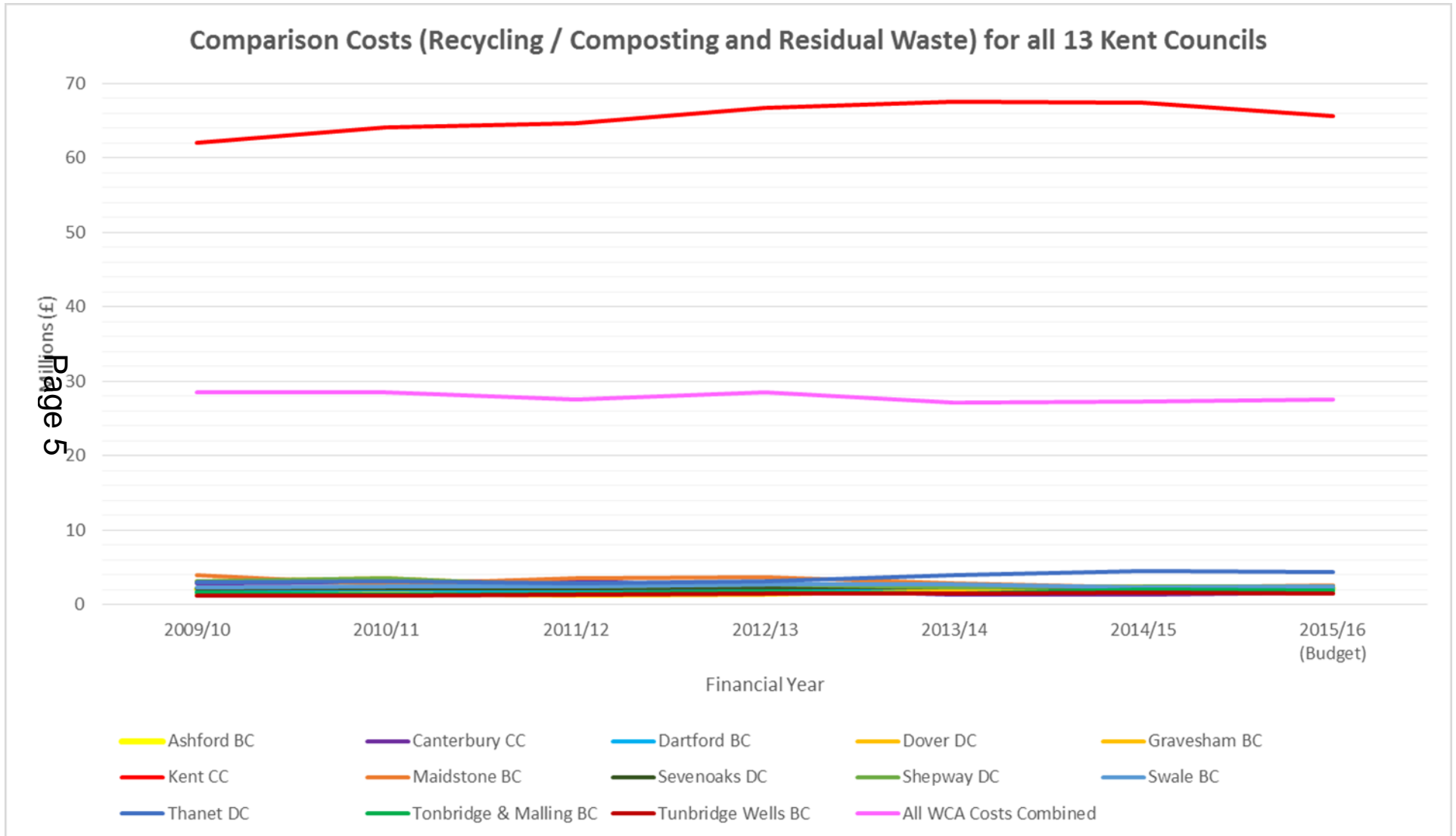
# How much is spent on recycling, waste & cleansing?

Total local gov't net expenditure on waste services in 2014/15 was around **£4bn**



Though LG expenditure on waste services has decreased (but not by much), waste services are increasing their share of total local authority service expenditure (7.6% from 6.4%)

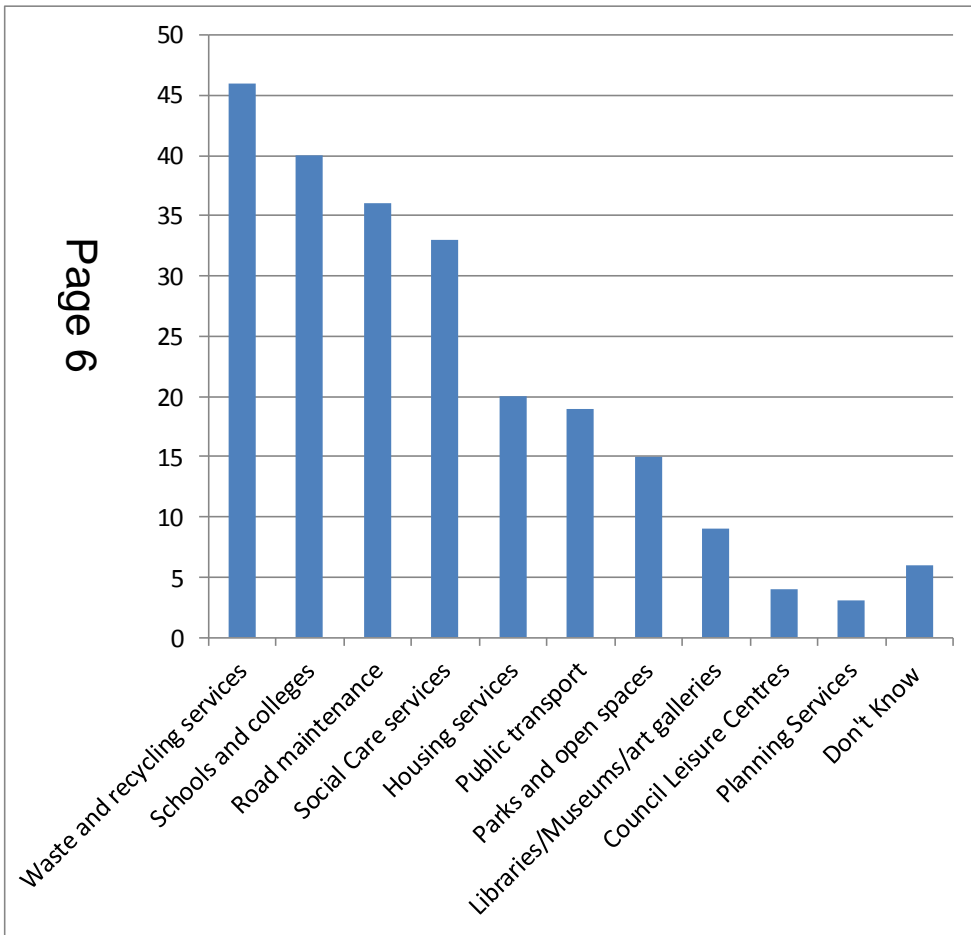
# Districts' and County Costs – Comparison of Scale



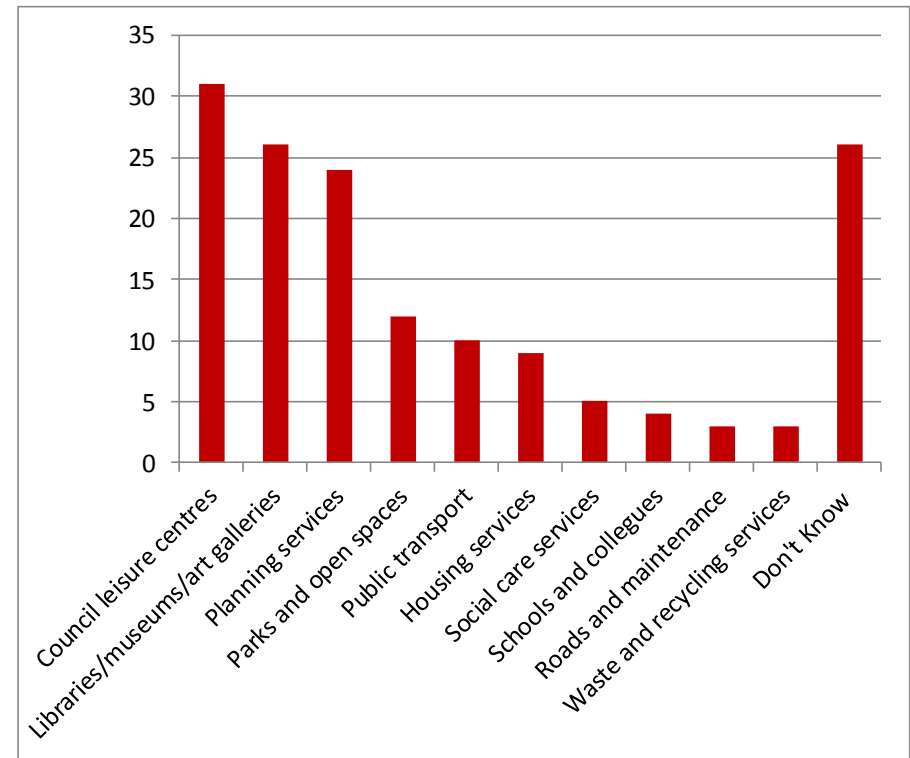
# Residents' views are ... ?

A 2013 You Gov poll found waste and recycling services are the most important service provided by the council.

Which of the following do you believe is the MOST important thing provided by your local council (Please tick up to three)?

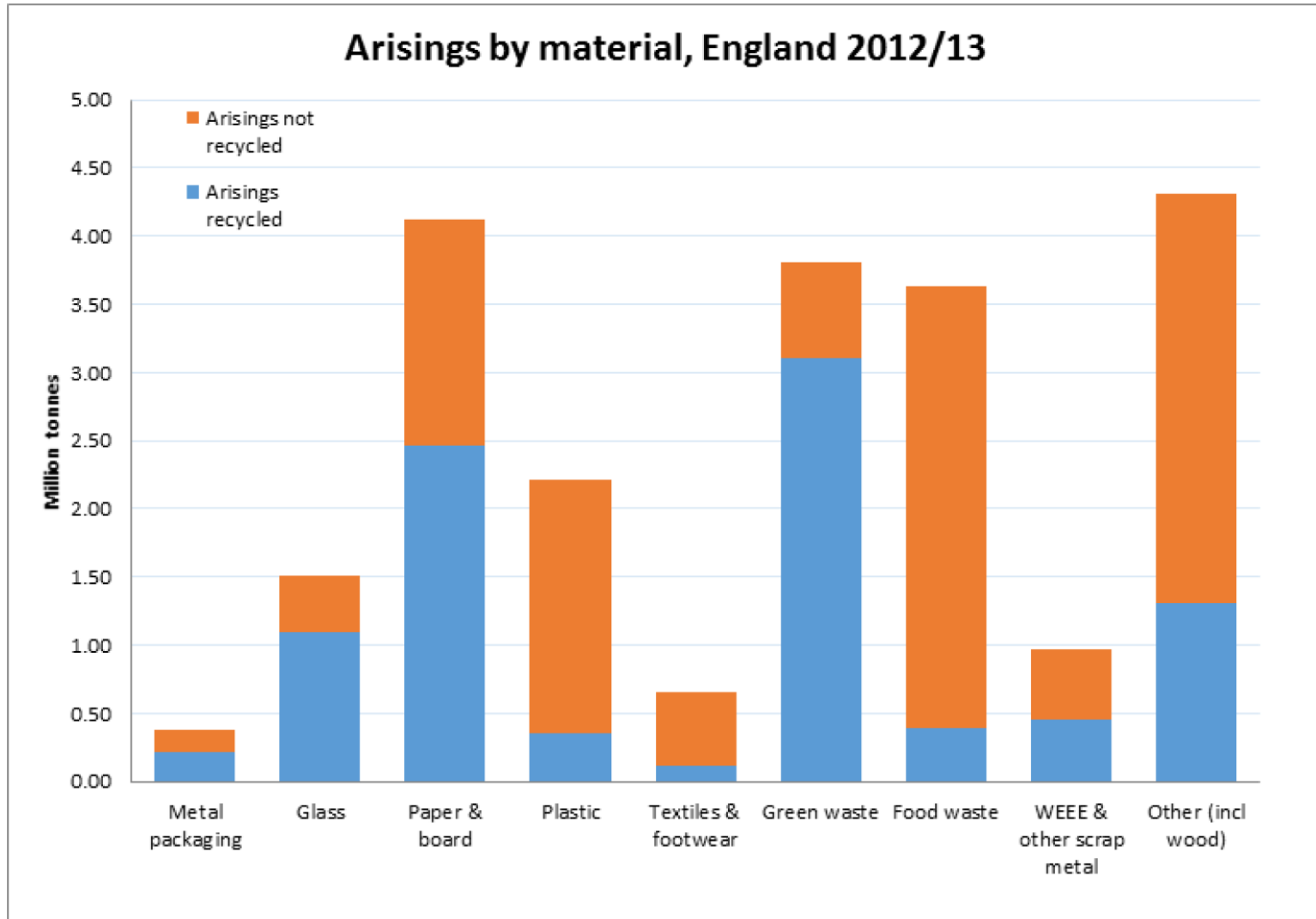


Which of the following do you believe is the LEAST important thing provided by your local council (Please tick up to three)?



# What goes into the bins? Opportunity or cost?

Page 7



# Why does the Partnership exist?



Waste and Emissions Trading Act 2003

## 32 Joint municipal waste management strategies: England

- (1) The waste authorities for a two-tier area must, at all times after the end of the period of 18 months beginning with the day on which this Act is passed, have for the area a joint strategy for the management of –
  - (a) waste from households, and
  - (b) other waste that, because of its nature or composition, is similar to waste from households.
- (2) The waste authorities for a two-tier area must keep under review the policies formulated by them for the purposes of subsection (1).

Page 8  
*That's the original legal reason.*

However, the Kent Resource Partnership has established for itself: -

- Joint work on **reducing costs** is mutually essential.
- We **protect our interests** e.g. legal, money, performance, taxpayers.
- We **maximise our 'clout'** with private sector and government.
- External funding is scarce – **increase our chances together.**
- Are there really any better alternatives?





Michelle Obama, First Lady of the United States,  
Speech in London, June 2015

*'It's not enough to  
**want** change.*

*You have to know how to  
**effect** change'.*

# How is the KRP effecting change?

- Joint working between Kent councils
  - East and Mid Kent Projects: avoiding £60 million of costs
- Approx. £10 million in external funds into services & communications
  - £1 million from WRAP and private sector bodies
  - £8.8 million from DCLG
- Substantial 'clout' with government and supply chain
  - 'At the negotiating table' on behalf of local gov't (e.g. formation of Regulations).
  - Ministerial attention and support for Kent initiatives
- KRP colleagues influencing national agenda
  - Advisory Committee on Packaging (ACP)
  - Local Authority Recycling Advisory Committee (LARAC)
  - National Association of Waste Disposal Organisations (NAWDO)
  - WRAP: Courtauld 2025, Food Waste, Communications, Plastics, Electricals, Textiles
  - Resource Association
  - Chartered Institution of Wastes Management

# Innovation, communications, collaboration



Page 11



# Focus for next 4 years: 'Big ticket' projects

- **West Kent Project:** financial & performance benefits.
- **East and Mid Kent Projects:** preparing for future phases (2021 and 2023 respectively).
- **Reducing avoidable food waste:** (with WRAP: Courtauld 2025 Project).
- **Recyclates:** improving quantity and quality across Kent
- **Protecting councils' interests:** legal, financial, performance, reputations, influence/clout
- **'Sweating our assets':** including the Partnership itself.

Thank you very much for listening.



@PaulVanston

This page is intentionally left blank